

Forged Alloy Wide Body Shackle with Bolt Pin Model No. 8-809



Main Features

- Forged alloy steel with alloy pin
- Size and the working load limit permanently shown on each shackle
- All shackles have a batch code which links to test certificate and quality traceability
- 100 % magnaflux crack detection during manufacturing
- 20,000 cycle fatigue rated to 1.5 times working load limit



Certification:

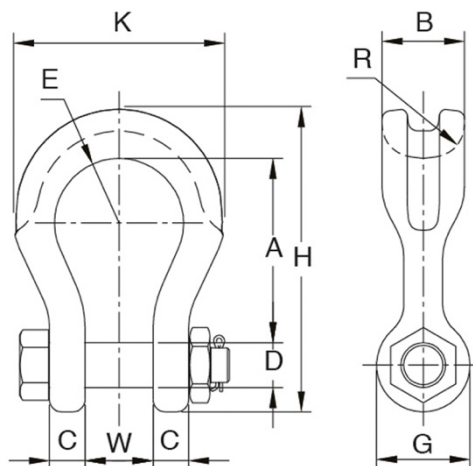
Each unit comes fully certified with a test certificate or an EC Declaration of Conformity stating compliance with the essential health and safety requirements of the Machinery Directive 2006/42/EC, the Supply of Machinery (Safety) Regulations 2008 and Section 6 of the Health and Safety at Work Etc Act 1974.

Manufactured and tested in accordance with EN1677-1. All YOKE Lifting points meet or exceed all the requirements of ASME B30.26.

Technical Data

| Product Code | Capacity (tonne) | Nominal Size (mm) | Dimensions (mm) | | | | | | | | | | Net Weight (kg) |
|--------------|------------------|-------------------|-----------------|----|----|----|----|----|-----|-----|----|----|-----------------|
| | | | A | B | C | D | E | G | H | K | R | W | |
| 8-809-19 | 7.0 | 19 | 91 | 41 | 18 | 22 | 32 | 46 | 150 | 104 | 32 | 33 | 1.7 |
| 8-809-26 | 12.5 | 26 | 118 | 54 | 23 | 29 | 41 | 61 | 194 | 140 | 35 | 44 | 3.8 |
| 8-809-32 | 18.0 | 32 | 148 | 64 | 30 | 36 | 51 | 68 | 238 | 172 | 38 | 54 | 6.7 |
| 8-809-38 | 30.0 | 38 | 176 | 80 | 35 | 45 | 64 | 89 | 289 | 216 | 45 | 60 | 12.5 |

Other sizes available - please ask for details.



Due to our policy of continual product development, dimensions, weights and specifications may change without prior notice. Please check with your Tiger sales team when ordering.

Our innovation, your safety