



## Digital Hoist Ring - UNC Thread Model No. 8-252

### Main Features

- Pivots to 230°, rotates through 360° due to its unique ball bearing design
- Manufactured from forged alloy steel, quenched and tempered
- Tested in accordance with EN1677-4
- Load rated parts are 100 % magnaflux crack detected
- Individual forged parts and batch code links to Test Certificate sheet
- Bolts are UNC thread
- Proof tested to 2.5 times the WLL
- Fatigue rated to 20,000 cycles at 1.5 times the WLL
- All YOKE Lifting points meet or exceed all the requirements of ASME B30.26
- Easy to attach or dismantle due to the forged hexagon shaped body of the Super Point
- Capable of rotating under load. Do not turn continuously in 90 degree direction at full load
- With the new WLL tables you can find the right Super Point attachment for your application and by the yellow marking on both sides you can measure disposal stage of the Super Point



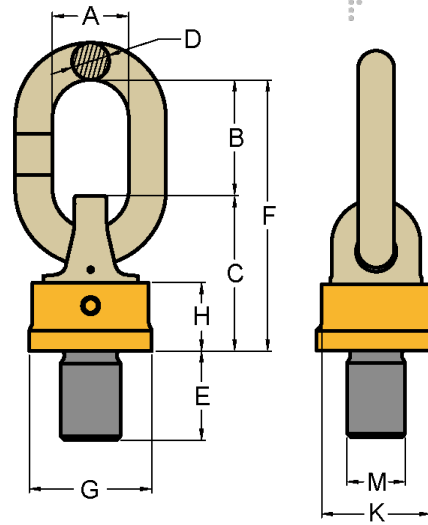
### Certification:

Each unit comes fully certified with a test certificate or an EC Declaration of Conformity stating compliance with the essential health and safety requirements of the Machinery Directive 2006/42/EC, the Supply of Machinery (Safety) Regulations 2008 and Section 6 of the Health and Safety at Work Etc Act 1974.

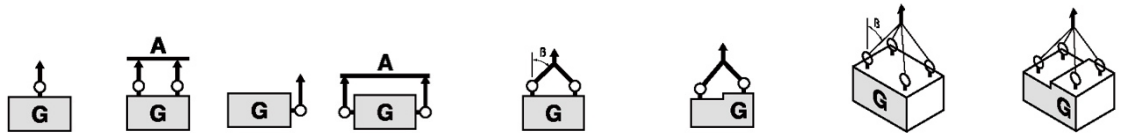
Manufactured and tested in accordance with EN1677-1. All YOKE Lifting points meet or exceed all the requirements of ASME B30.26.

### Technical Data

Product Code	Capacity/ WLL (tonnes)	Thread version		TPI	Dimensions (inch)								Torque in (Nm)	Net Weight (lbs)
		M (inch)	E (inch)		G	C	K	H	F	D	B	A		
8-252-007-01	0.5	3/8	0.56	16UNC	1.44	1.89	1.34	0.81	3.98	0.51	2.09	1.38	10 - 40	1.0
8-252-007-02	0.7	1/2	0.75	13UNC	1.44	1.89	1.34	0.81	3.98	0.51	2.09	1.38	15 - 40	1.0
8-252-014-02	1.4	5/8	0.94	11UNC	1.44	1.89	1.34	0.81	3.98	0.51	2.09	1.38	45 - 130	1.0
8-252-025-01	2.5	3/4	1.13	10UNC	2.05	2.68	1.81	1.10	5.00	0.63	2.32	1.38	100 - 170	2.1
8-252-040-02	4.0	1	1.50	8UNC	2.24	2.95	1.97	1.36	5.83	0.75	2.87	1.57	190 - 280	3.3
8-252-067-02	6.7	1 1/4	1.88	7UNC	2.76	3.74	2.56	1.61	6.42	0.79	2.68	1.57	230 - 400	5.3
8-252-080-02	8.0	1 1/4	1.88	7UNC	3.19	4.17	2.95	1.89	7.91	0.87	3.74	1.97	270 - 600	8.1
8-252-100-02	10.0	1 1/2	2.25	6UNC	3.19	4.17	2.95	1.89	7.91	0.87	3.74	1.97	270 - 700	8.3
8-252-125-03	12.5	1 3/4	2.63	5UNC	3.19	4.17	2.95	1.89	7.91	0.87	3.74	1.97	270 - 700	8.8
8-252-125-05	12.5	2	3.00	4.5UNC	3.19	4.17	2.95	1.89	7.91	0.87	3.74	1.97	270 - 700	9.7
8-252-170-04	17.0	2	3.00	4.5UNC	4.09	5.00	3.74	2.28	10.08	1.26	5.08	2.76	350 - 800	16.7
8-252-170-06	18.0	2 1/4	3.38	4.5UNC	4.09	5.00	3.74	2.28	10.08	1.26	5.08	2.76	350 - 900	17.8
8-252-200-01	20.0	2 1/2	3.75	4UNC	4.09	5.00	3.74	2.28	10.08	1.26	5.08	2.76	350 - 900	19.6
8-252-280-01	28.0	2 1/2	3.75	4UNC	5.08	6.85	4.53	3.07	12.01	1.42	5.16	3.15	500 - 1000	36.1
8-252-350-01	35.0	3 1/2	5.25	4UNC	5.83	7.36	5.31	3.27	14.41	1.77	5.51	3.62	500 - 1400	55.7



Kind of attachment



Number of legs	1	2	1	2	2	2	2	3-4	3-4	3-4	
Load direction	0°	0°	90°	90°	0-45°	45°-60°	unsymm.	0-45°	45°-60°	unsymm.	
Product Code	Thread	WLL (t)									
8-252-007	3/8	1.00	2.00	0.50	1.00	0.70	0.50	0.50	1.00	0.75	0.50
	1/2	1.40	2.80	0.70	1.40	1.00	0.70	0.70	1.40	1.00	0.70
8-252-014	5/8	2.80	5.60	1.40	2.80	2.00	1.40	1.40	3.00	2.12	1.40
8-252-025	3/4	5.00	10.00	2.50	5.00	3.55	2.50	2.50	5.30	3.75	2.50
8-252-040	1	8.00	16.00	4.00	8.00	5.60	4.00	4.00	8.50	6.00	4.00
8-252-067	1 1/4	12.00	24.00	6.70	13.40	9.50	6.70	6.70	14.00	10.00	6.70
8-252-080	1 1/4	12.00	24.00	8.00	16.00	11.20	8.00	8.00	16.00	12.00	8.00
8-252-100	1 1/2	15.00	30.00	10.00	20.00	14.00	10.00	10.00	21.20	15.00	10.00
8-252-125	1 3/4	15.00	30.00	12.50	25.00	17.00	12.50	12.50	25.00	18.00	12.50
	2	15.00	30.00	12.50	25.00	17.00	12.50	12.50	25.00	18.00	12.50
8-252-170	2	25.00	50.00	17.00	34.00	23.50	17.00	17.00	35.00	25.00	17.00
	2 1/4	25.00	50.00	18.00	36.00	25.00	18.00	18.00	37.50	26.50	18.00
8-252-200	2 1/2	25.00	50.00	20.00	40.00	28.00	20.00	20.00	42.50	30.00	20.00
8-252-280	2 1/2	32.50	65.00	28.00	56.00	39.00	28.00	28.00	58.00	42.00	28.00
8-252-350	3 1/2	40.00	80.00	35.00	70.00	49.00	35.00	35.00	74.00	52.50	35.00

Due to our policy of continual product development, dimensions, weights and specifications may change without prior notice. Please check with your Tiger sales team when ordering.