

## Digital Stainless Steel Eye Point - Metric Thread

### Model No. 8-S291



#### Main Features

- Rotates through 360° adjustable in the direction of the load
- Manufactured from stainless steel
- Tested in accordance with EN1677-1
- Individual forged parts and cap screw are traceable to Test Certification
- Bolts are Metric thread
- Proof tested to 2.5 times the WLL
- Fatigue rated to 20,000 cycles at 1.5 times the WLL
- All YOKE Lifting points meet or exceed all the requirements of ASME B30.26
- Quick and simple assembly, just a tapped hole is required
- Used in different applications such as chemical, oil, coal industries, food processing, clean room and precision instrument.



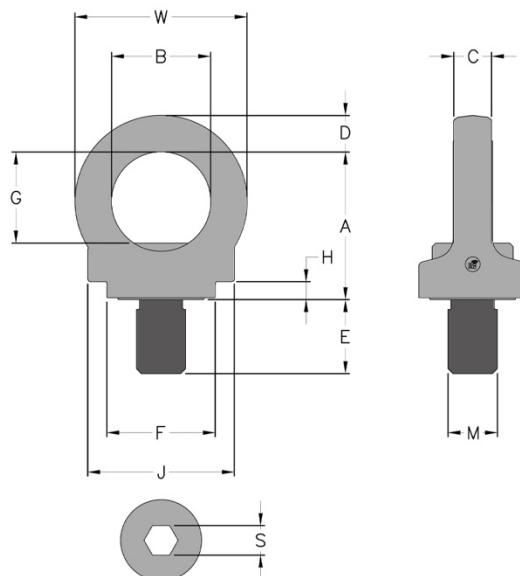
#### Certification:

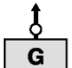
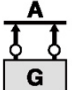

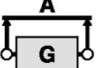
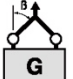

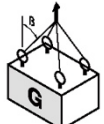
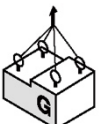
Each unit comes fully certified with a test certificate or an EC Declaration of Conformity stating compliance with the essential health and safety requirements of the Machinery Directive 2006/42/EC, the Supply of Machinery (Safety) Regulations 2008 and Section 6 of the Health and Safety at Work Etc Act 1974.

Manufactured and tested in accordance with EN1677-1. All YOKE Lifting points meet or exceed all the requirements of ASME B30.26.

#### Technical Data

Product Code	Capacity (tonne)	Thread version		Pitch	Dimensions (mm)										Torque in (Nm)	Net Weight (kg)
		M (mm)	E (mm)		DIN13	A	B	C	D	F	G	H	J	S		
8-S291-005	0.5	M12	18	1.75	45	30	10	11	33	29	5	44	8	52	10	0.2
8-S291-010	1.0	M16	24	2.00	52	35	14	13	35	33	5	51	10	61	30	0.3
8-S291-020	2.0	M20	30	2.50	60	40	16	15	44	37	7	60	12	70	70	0.6
8-S291-025	2.5	M24	36	3.00	72	49	19	18	52	46	10	72	14	84	150	1.0



Kind of attachment											
Number of legs	1	2	1	2	2	2	3-4	3-4	3-4		
Load direction	0°	0°	90°	90°	0-45°	45°-60°	unsymm.	0-45°	45°-60°	unsymm.	
Product Code	Thread	WLL (t)									
8-S291-005	M12	1.2	2.4	0.5	1	0.7	0.5	0.5	1.0	0.7	0.5
8-S291-010	M16	2.4	4.8	1.0	2	1.4	1.0	1.0	2.1	1.5	1.0
8-S291-020	M20	3.6	7.2	2.0	4	2.8	2.0	2.0	4.2	3.0	2.0
8-S291-025	M24	5.2	10.4	2.5	5	3.5	2.5	2.5	5.3	3.7	2.5

Due to our policy of continual product development, dimensions, weights and specifications may change without prior notice. Please check with your Tiger sales team when ordering.