

Tiger Industrial Range

Industrial range of chain blocks, lever hoists, trolleys and beam clamps



Universal wheels



Main Features

- Plain/push and geared trolleys - 500kg – 5.0t
- Beam Clamps - 1.0t to 10.0t
- Chain Blocks - 500kg – 5.0t
- Lever Hoists - 750kg – 6.0t
- Rugged steel body construction yet lightweight and portable
- Meets or exceeds all international standards
- Trolley wheels are powder coated universal wheels which suit both tapered and flat flange beams

Hoists

- Drop forged & heat-treated alloy hooks
- Safe reliable twin pawl mechanical brake
- High quality alloy calibrated load chain
- Proof tested to 1.5 times rated capacity
- Guaranteed light load protection
- All Tiger lever hoist handles contain rubber which is free from phthalates

Additional Lever Hoist Features

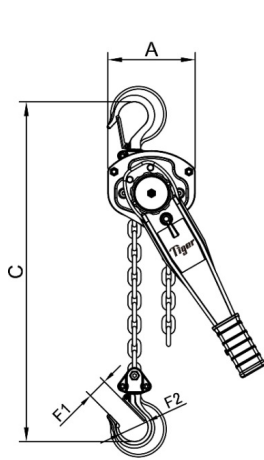
- 360-degree handle rotation
- Heavy duty chain end-stop
- Short stroke and low lever pulling effort
- Easy single-hand “freewheeling” operation

Certification:

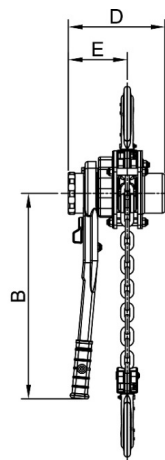
Each unit comes fully certified with a test certificate or an EC Declaration of Conformity stating compliance with the essential health and safety requirements of the Machinery Directive 2006/42/EC.

Lever Hoists

| Product Code | Capacity (tonne) | Effort (kg) | Dimensions (mm) | | | | | | | Load Chain | | Standard HOL (m) | Mass @ std HOL (kg) | Mass for extra metre HOL (kg) |
|--------------|------------------|-------------|-----------------|-----|-----|-----|-----|----|----|---------------|--------------|------------------|---------------------|-------------------------------|
| | | | A | B | C | D | E | F1 | F2 | Diameter (mm) | No. of falls | | | |
| TRL-0075 | 0.75 | 23 | 128 | 240 | 275 | 158 | 99 | 24 | 38 | ∅6.3 | 1 | 1.5 | 7.5 | 0.9 |
| TRL-0100 | 1.0 | 29 | 128 | 236 | 295 | 158 | 99 | 28 | 45 | ∅6.3 | 1 | 1.5 | 7.5 | 0.9 |
| TRL-0150 | 1.5 | 26 | 154 | 360 | 320 | 172 | 104 | 34 | 51 | ∅7.1 | 1 | 1.5 | 10.0 | 1.1 |
| TRL-0200 | 2.0 | 35 | 154 | 360 | 367 | 172 | 104 | 35 | 53 | ∅7.1 | 1 | 1.5 | 10.5 | 1.1 |
| TRL-0300 | 3.0 | 38 | 182 | 360 | 400 | 195 | 108 | 36 | 56 | ∅10.0 | 1 | 1.5 | 18.0 | 2.2 |
| TRL-0600 | 6.0 | 40 | 242 | 360 | 570 | 195 | 108 | 49 | 70 | ∅10.0 | 2 | 1.5 | 29.3 | 4.3 |



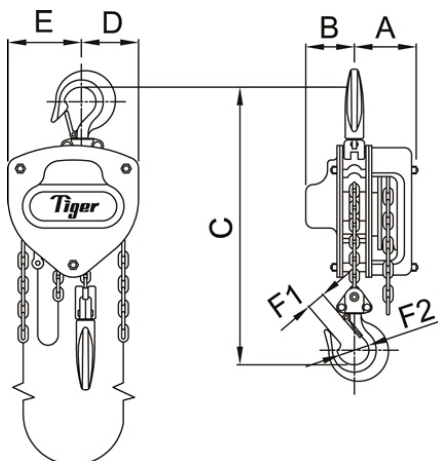
0.75t-3.0t



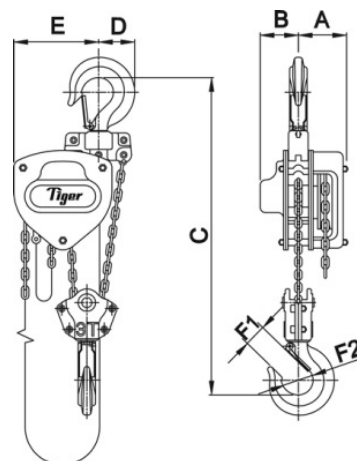
6.0t

Chain Blocks

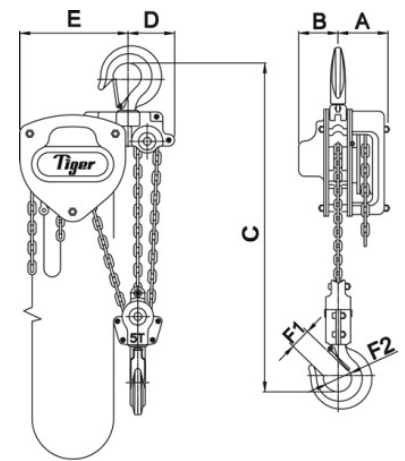
| Product Code | Capacity (tonne) | Effort (kg) | Dimensions (mm) | | | | | | | Load Chain | | Standard HOL (m) | Mass @ std HOL (kg) | Mass for extra metre HOL (kg) |
|--------------|------------------|-------------|-----------------|----|-----|-----|-----|----|----|---------------|--------------|------------------|---------------------|-------------------------------|
| | | | A | B | C | D | E | F1 | F2 | Diameter (mm) | No. of falls | | | |
| TRC-0050 | 0.5 | 21 | 93 | 66 | 305 | 52 | 78 | 24 | 38 | ∅6.3 | 1 | 3 | 10.5 | 1.9 |
| TRC-0100 | 1.0 | 25 | 93 | 66 | 340 | 63 | 87 | 28 | 45 | ∅6.3 | 1 | 3 | 11.5 | 1.9 |
| TRC-0150 | 1.5 | 32 | 98 | 73 | 385 | 78 | 102 | 34 | 51 | ∅7.1 | 1 | 3 | 16.0 | 2.1 |
| TRC-0200 | 2.0 | 34 | 101 | 79 | 420 | 87 | 113 | 35 | 53 | ∅8.0 | 1 | 3 | 20.0 | 2.4 |
| TRC-030T | 3.0 | 34 | 98 | 73 | 488 | 60 | 148 | 36 | 56 | ∅7.1 | 2 | 3 | 23.0 | 3.2 |
| TRC-0500 | 5.0 | 31 | 101 | 79 | 575 | 122 | 209 | 49 | 70 | ∅8.0 | 3 | 3 | 37.5 | 5.2 |



0.5t – 2.0t

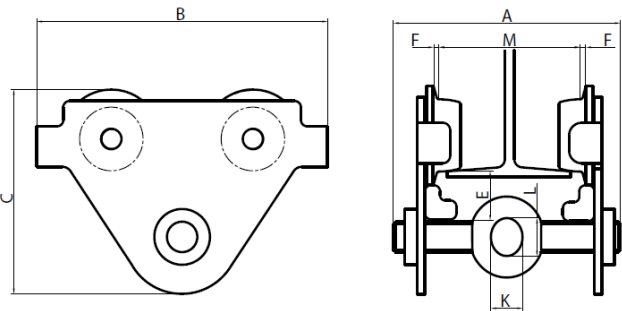


3.0t twin fall



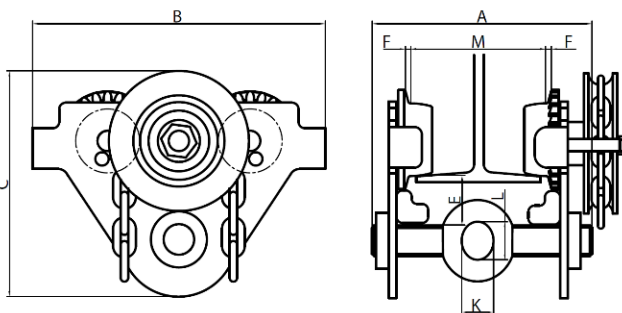
5.0t

Screw Push Trolley



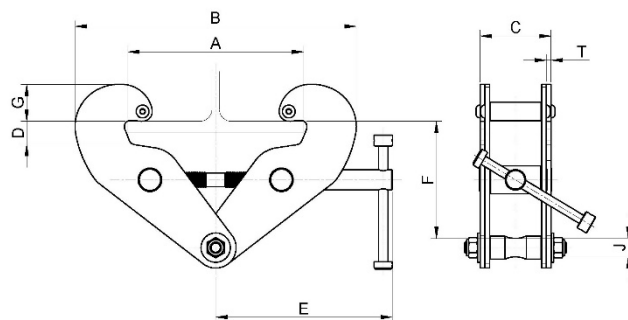
| Product Code | Capacity (tonne) | Beam Range M | Dimensions (mm) | | | | | | | | Min. curve ratio (m) | Net Weight (kg) |
|--------------|------------------|--------------|-----------------|-----|-----|----|---|----|----|-----|----------------------|-----------------|
| | | | A | B | C | E | F | K | L | | | |
| SPT-0050 | 0.5 | 50-220 | 300 | 210 | 190 | 33 | 3 | 25 | 30 | 0.9 | 7.0 | |
| SPT-0100 | 1.0 | 64-220 | 300 | 260 | 211 | 31 | 3 | 30 | 35 | 1.0 | 10.0 | |
| SPT-0200 | 2.0 | 88-220 | 310 | 310 | 236 | 32 | 3 | 40 | 47 | 1.1 | 15.5 | |
| SPT-0300 | 3.0 | 102-220 | 320 | 390 | 295 | 46 | 3 | 48 | 58 | 1.3 | 26.0 | |
| SPT-0500 | 5.0 | 114-220 | 330 | 450 | 334 | 47 | 3 | 60 | 70 | 1.4 | 38.0 | |

Screw Geared Trolley



| Product Code | Capacity (tonne) | Beam Range M | Dimensions (mm) | | | | | | | | Min. curve ratio (m) | Net Weight (kg) |
|--------------|------------------|--------------|-----------------|-----|-----|----|---|----|----|-----|----------------------|-----------------|
| | | | A | B | C | E | F | K | L | | | |
| SGT-0050 | 0.5 | 50-220 | 300 | 210 | 190 | 33 | 3 | 25 | 30 | 0.9 | 9.0 | |
| SGT-0100 | 1.0 | 64-220 | 300 | 260 | 211 | 31 | 3 | 30 | 35 | 1.0 | 13.0 | |
| SGT-0200 | 2.0 | 88-220 | 310 | 310 | 236 | 32 | 3 | 40 | 47 | 1.1 | 20.5 | |
| SGT-0300 | 3.0 | 102-220 | 320 | 390 | 295 | 46 | 3 | 48 | 58 | 1.3 | 30.0 | |
| SGT-0500 | 5.0 | 114-220 | 330 | 450 | 334 | 47 | 3 | 60 | 70 | 1.4 | 45.0 | |

Beam Clamp



| Product Code | Capacity (tonne) | Dimensions (mm) | | | | | | | | | Net Weight (kg) |
|--------------|------------------|-----------------|---------|-----|----|-----|---------|-------|----|------|-----------------|
| | | A | B | C | D | E | F | G | J | | |
| BC-0100 | 1.0 | 75-210 | 182-328 | 77 | 26 | 190 | 144-117 | 52-38 | 20 | 4.0 | |
| BC-0200 | 2.0 | 75-210 | 182-328 | 85 | 26 | 190 | 144-117 | 52-38 | 20 | 4.5 | |
| BC-0300 | 3.0 | 75-305 | 214-460 | 107 | 35 | 240 | 224-179 | 58-40 | 22 | 8.0 | |
| BC-0500 | 5.0 | 75-305 | 214-460 | 121 | 35 | 240 | 224-175 | 58-40 | 28 | 10.0 | |
| BC-1000 | 10.0 | 120-350 | 295-510 | 182 | 36 | 300 | 222-171 | 71-54 | 43 | 24.5 | |

Due to our policy of continual product development, dimensions, weights and specifications may change without prior notice. Please check with your Tiger sales team when ordering.

Bespoke designs available on request – contact info@tigerlifting.com for more information.