

## Wirop Flemish Eye Steel Sleeves Model No. W902

### Main Features

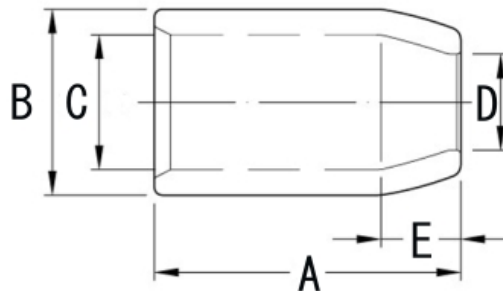
- Crystal inspection on carbon steel sample
- Exact in-house forging, heat treatment and sand blasting process
- Test dynamic endurance on Flemish eye steel sleeves sample 75,000 times and record maximum breaking load
- Strictly follow EN 13411-3 standard
- Batch code on each steel sleeve for traceability
- Sustained improvement on manufacturing sleeves
- Galvanized and self-coloured sleeves are available



### Technical Data

Product Code	For Wire Rope Size (inch)	N.W Per 100pcs (kg)	Dimensions (inch)					Max. O.D. After Swage (inch)
			A	B	D	E	C	
W902-013	1/2	13.00	2.00	1.22	0.63	0.56	0.91	1.01
W902-016	5/8	26.00	2.75	1.47	0.75	0.63	1.09	1.24
W902-019	3/4	40.00	3.19	1.72	0.91	0.84	1.28	1.46
W902-022	7/8	60.00	3.56	2.03	1.03	1.00	1.53	1.68
W902-026	1	89.00	4.00	2.28	1.16	1.13	1.72	1.93
W902-028	1-1/8	118.00	4.80	2.50	1.28	1.25	1.94	2.13
W902-032	1-1/4	161.00	5.19	2.78	1.44	1.41	2.16	2.32
W902-038	1-1/2	227.00	6.25	3.25	1.69	1.69	2.63	2.71
W902-045	1-3/4	366.00	7.25	3.84	1.94	1.97	3.13	3.10
W902-050	2	514.00	8.50	4.38	2.25	2.25	3.63	3.56
W902-057	2-1/4	879.00	9.56	5.03	2.50	2.53	4.03	4.12
W902-064	2-1/2	1068.00	10.50	5.50	2.75	2.81	4.50	4.50
W902-076	3	1335.00	12.00	6.00	3.25	3.38	5.00	4.96

Other sizes available - please ask for details.



Due to our policy of continual product development, dimensions, weights and specifications may change without prior notice. Please check with your Tiger sales team when ordering.