

Angular Contact Bearing Swivels Model No. 8-301

Main Features

- Manufactured using the highest grade of material available
- Designed with a safety factor of 5:1
- Available in sizes from 3/4 tonnes to 25 tonnes
- Available for wire lines 1/4" to 1-1/2"
- Zinc plated for corrosion resistance and longer life
- Manufactured with grease fittings for superior performance
- Designed for low starting torque and high rotation speed
- All Swivels parts are 100 % magnaflux crack detected
- 20,000 cycle fatigue rate to 1.5 times working load limit
- All parts with batch number for quality certified and traceability



Certification:

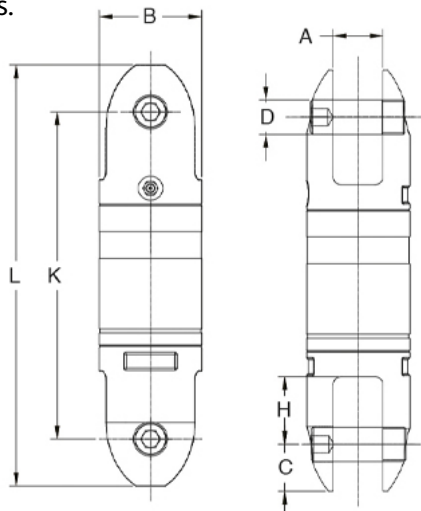
Each unit comes fully certified with a test certificate or an EC Declaration of Conformity stating compliance with the essential health and safety requirements of the Machinery Directive 2006/42/EC, the Supply of Machinery (Safety) Regulations 2008 and Section 6 of the Health and Safety at Work Etc Act 1974.

Manufactured and tested in accordance with EN1677-1. All YOKE Lifting points meet or exceed all the requirements of ASME B30.26.

Technical Data

Product Code	Wire Line Size (mm)	Capacity (tonnes)	Dimensions (mm)								Net Weight (kg)
			B	K	L	C	A	D	H		
8-301-03	13	3.0	51	159	203	23	23	16	31	2.0	
8-301-05	16	5.0	64	200	262	31	32	22	37	4.0	
8-301-085	19	8.5	76	242	312	35	37	25	50	6.7	
8-301-10	22	10.0	102	317	408	46	42	38	53	18.2	
8-301-15	25	15.0	108	317	408	46	48	38	56	21.0	
8-301-25	32	25.0	132	374	495	61	62	51	69	36.5	

Other sizes available - please ask for details.



Due to our policy of continual product development, dimensions, weights and specifications may change without prior notice. Please check with your Tiger sales team when ordering.

Our innovation, your safety