

## Angular Contact Bearing Swivels Model No. 8-301

### Main Features

- Manufactured using the highest grade of material available
- Designed with a safety factor of 5:1
- Available in sizes from 3/4 tonnes to 25 tonnes
- Available for wire lines 1/4" to 1-1/2"
- Zinc plated for corrosion resistance and longer life
- Manufactured with grease fittings for superior performance
- Designed for low starting torque and high rotation speed
- All Swivels parts are 100% magnaflux crack detected
- 20,000 cycle fatigue rate to 1.5 times working load limit
- All parts with batch number for quality certified and traceability
- Minimum Ultimate Load is 5 times the Working Load Limit. Maximum Proof Load is 2 times the Working Load Limit



### Certification:

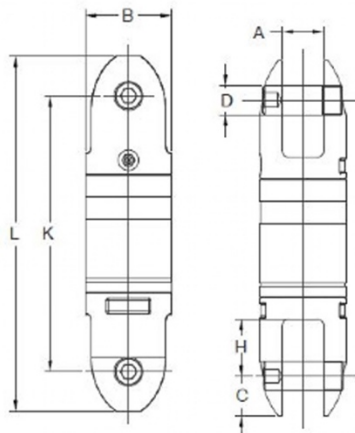
Each unit comes fully certified with a test certificate or an EC Declaration of Conformity stating compliance with the essential health and safety requirements of the Machinery Directive 2006/42/EC, the Supply of Machinery (Safety) Regulations 2008 and Section 6 of the Health and Safety at Work Etc Act 1974.

Manufactured and tested in accordance with EN1677-1. All YOKE Lifting points meet or exceed all the requirements of ASME B30.26.

### Technical Data

Product Code	Wire Line Size (mm)	Capacity (tonnes)	Dimensions (mm)								Net Weight (kg)
			A	B	C	D	H	K	L		
8-301-03	13	3.0	23	51	23	16	31	159	203	2.0	
8-301-05	16	5.0	32	64	31	22	37	200	262	4.0	

Other sizes available - please ask for details.



Due to our policy of continual product development, dimensions, weights and specifications may change without prior notice. Please check with your Tiger sales team when ordering.